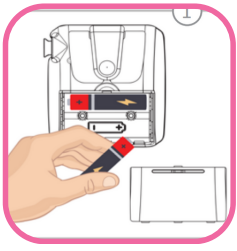
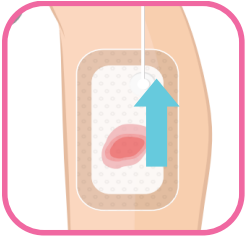


HOW TO APPLY THE VIVEREX



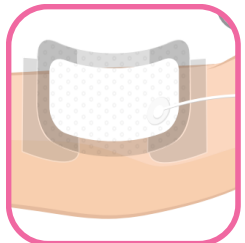
1 Insert the batteries

Insert 2AA batteries into the back of the Viverex device. All indicators will flash twice indicating the device is ready for use. Secure and cover the battery compartment



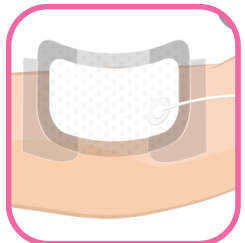
2 Check the wound and surrounding skin

Refer to hospital policies and procedures for wound bed prep for NPWT. Check the surrounding skin and ensure it is clean and dry.



3 Placement of dressing

Remove backing layer. Ensure the dressing with port is placed on good intact skin in the highest or most prominent position.



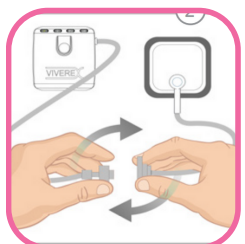
4 Smooth & remove any creases

Smooth the dressing down and remove any creases to ensure a good seal is achieved before connecting the luer locks to the device.



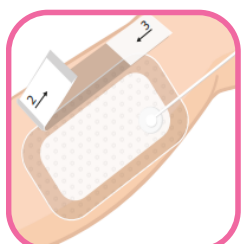
5 Connect the dressing to the device

Twist the luer connectors to connect the dressing to the device.



6 Switch the device on

Press and hold the green button to activate the device. The green ticket light will flash intermittently to indicate a seal has been achieved and negative pressure is being delivered to the wound bed.



7 Before applying fixation strips consider skin prep wipes

After a seal has been achieved consider using skin prep wipes to protect fragile skin and enhance adhesion a seal. Border the dressing with the 4 fixation strips provided. Avoid covering the white pad of the dressing with securing strips to prevent maceration.

8 Check the pump is flashing green

Educate the patient on the indicator lights of the device. Refer to shower instructions and dressing instructions.

9 Placement of device

Place device in VivereX carry bag/belt or other suitable location. Avoid dropping pump.

10 Document therapy start date

Document the date therapy started on the pump and in patient notes.

Learn more:

For Clinical Support please contact



Sam 0480 491 170
sbell@molmike.com.au

Sarah 0447 298 553
sross@molmike.com.au

 molmike
medical